

## LATEST NEWS:

UCC-Compliant Products Enable Implementation Cost-Savings

## EAN.UCC Standards Certified

The Uniform Code Council, Inc.® (UCC®) has announced that the INTEGRA™ 9500 has passed certification tests in selected symbol categories for bar code verification of the EAN.UCC System Standards.

As of January, 2005, the INTEGRA™ 9500 is the **ONLY** barcode verification system available on the market certified for EAN.UCC System Standards.

## What is the INTEGRA™ 9500?

The INTEGRA™ 9500 bar code quality station is an all in one bar code verifier with analytical software that is extremely easy to operate. Just place the label on the viewing platform and it is graded. No button to press - Very user friendly.

The INTEGRA™ 9500 will automatically identify the correct bar code symbology as well as the correct aperture setting. The results are easily read on the built-in LCD monitor.

## INTEGRA™ 9500 Unique Features

The INTEGRA™ 9500 inspects all nine of the ISO (ANSI) parameters **PLUS** added features of determining Blemishes, and Human Readable Validation.

The analysis is color coded to show exactly where the problem is with the bar code. Sections of the bar code can be analyzed to better determine how to solve the problem. Reference to an on-line help screen will aid in this analysis.

High-resolution inspection of the bar code is possible due to the use of very high resolution cameras (1.3 mega-pixels to 6.6 mega-pixels). This allows reading (and analyzing) up to every one thousandth of an inch (.001") of the bar code height.

**Exceeds the ten-scan average required by ISO.**



## Unique Features Continued:

Camera technology allows more detailed analysis of the bar code, and it makes reading of small and truncated codes possible, accurate, and very easy.

Multiple codes, including any combination of linear, matrix and stacked (PDF-417, Micro PDF, Data Matrix, RSS, Composite Codes, among others) can be verified on one label within the field of view, by using the Optional Multi-Code Feature.

## Accuracy, Repeatability and Reliability

Accuracy and repeatability are paramount in bar code verification. The INTEGRA™ 9500 is the **most accurate verifier** on the market today with the highest degree of repeatability. The operator is not involved in the scanning process. No wand to hold or move, no angle to maintain, and no buttons to push that can affect the overall grade results.

The INTEGRA™ 9500 Bar Code Station is the **most reliable system** on the market. There are no moving parts to wear out, no laser diode to burn out.

The INTEGRA™ 9500 is supplied with a NIST traceable conformance standard test card provided by the UCC to ensure that it is always within a known calibration standard.

## PC System

INTEGRA® 9500 Software  
Windows XP Professional  
Industrial Chassis  
Intel Celeron 2.4 Ghz  
256 MB RAM  
40 GB HDD  
DVD / RW Drive  
Nema 4 sealed 104 key board

## Monitor

12.1" LCD Monitor (built in)  
800 x 600 resolution  
12 VDC 3.75 A 45 W

## Camera

Monochrome Camera  
1.3 mega-pixels to 6.6 mega-pixels

## Light Source

White light  
Wratten 26 Red Filter  
12 vdc @ 1.6 A

## Inputs / Outputs

USB 2.0 port (3)  
Serial Port  
VGA Port  
10/100 GB. Lan (Ethernet)

## Main Power Supply

Internal fuse (5A)  
400 watt ATX Power Supply  
50/60 Hz 90 to 230 VAC  
UL Approved  
CE Approved

## Size of Field of View

From: 2.5" x 2" (63mm x 50mm)

To: 6.25" x 5" (126mm x 100mm)

Dependant on camera / lens configuration.

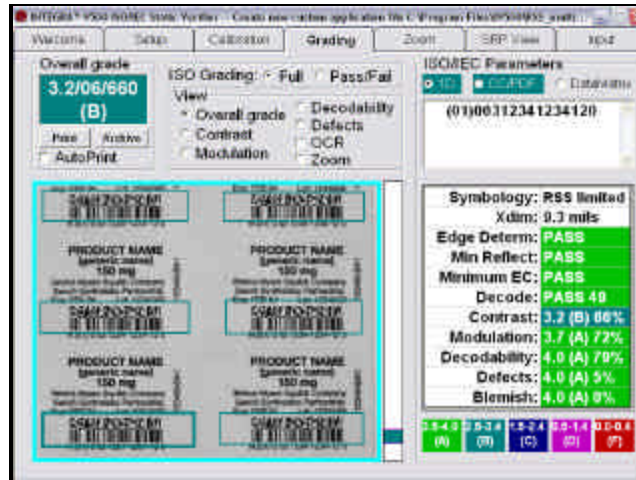
## Scan Resolution

All codes are scanned every .002"  
(.002mm) and up to .001" (.001mm).

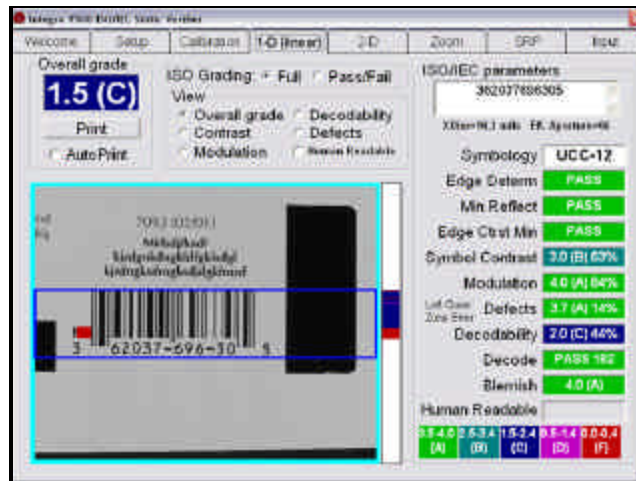
## Contact Information

Label Vision Systems, Inc.  
101 Auburn Court  
Peachtree City, GA 30269  
toll free: 800.432.9430  
voice: 770.487.6414  
fax: 770.487.0860  
URL: [www.lvs-inc.com](http://www.lvs-inc.com)  
Email: [info@lvs-inc.com](mailto:info@lvs-inc.com)

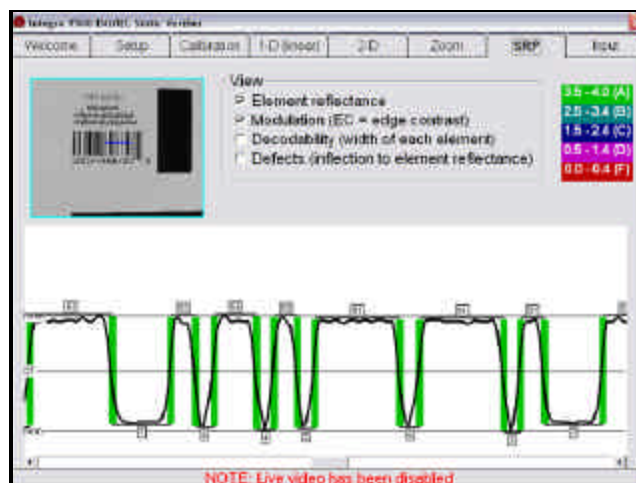
## INTEGRA® 9500 Multi-Code (optional feature)



## INTEGRA® 9500 Operate Screen



## INTEGRA® 9500 Scan Reflectance Profile



## Warranty

The INTEGRA™ 9500 comes with a twelve months return to base parts and labor warranty. Free software upgrades can be downloaded from the LVS web site to keep the system current with the latest software changes.

## ISO/IEC/ANSI Verification

Edge Determination  
Minimum Reflectance  
Min Edge Contrast  
Decode  
Symbol Contrast  
Modulation  
Decodability  
Defects (spots / voids)  
Quiet Zone

Blemish  
Validation of Human Readable

## Supported Symbolgies

Code 39  
1 2 of 5 (ITF)  
UCC/EAN 128  
Code 128  
Codabar  
UPC-A & E  
EAN-8 & 13  
ITF-14  
RSS (Linear)  
RSS (Stacked)  
RSS Composite (CCA/CCB/CCC)  
RSS Limited  
Pharmacode  
Data Matrix  
PDF-417  
Micro PDF-417  
OCR Validation

## EAN.UCC Standard

ISO 15416  
ISO 15415  
ISO 15426  
ISO 16022  
MIL STD. 130L  
ITS199-002 (7-02)  
UID Guidelines 07/29/03  
21 CFR PART 11 COMPLIANT

EAN.UCC standards certified in the following symbol categories:

EAN/UPC  
ITF - 14  
UCC/EAN-128  
EAN/UPC & extended  
RSS 14  
RSS for Healthcare  
EAN/UPC w/ CC  
UCC/EAN-128 w/ CC  
RSS-14 w/ CC  
DataMatrix